

Important safeguards	4
Handy steam generator	5
Description	6
Instructions for use	6
Assembly and Use	7
Starting the Steam Cleaner	8
Refilling the Water Tank	9
Sanitizing system	9
Maintenance	10
Technical specifications	11
Troubleshooting guide	11
Electrical requirements	11
Guarantee and service information	11

SUPERCLEAN CONCEPT

The by-product of many years of research, the Superclean family of products are designed to combine maximum cleaning and true sanitizing capability in one easy step. By combining the purity and performance of eco-friendly steam with the unique properties of our eco friendly Clean Blast formula results in appliances that give you extreme clean faster and easier than ever before.

IMPORTANT SAFEGUARDS

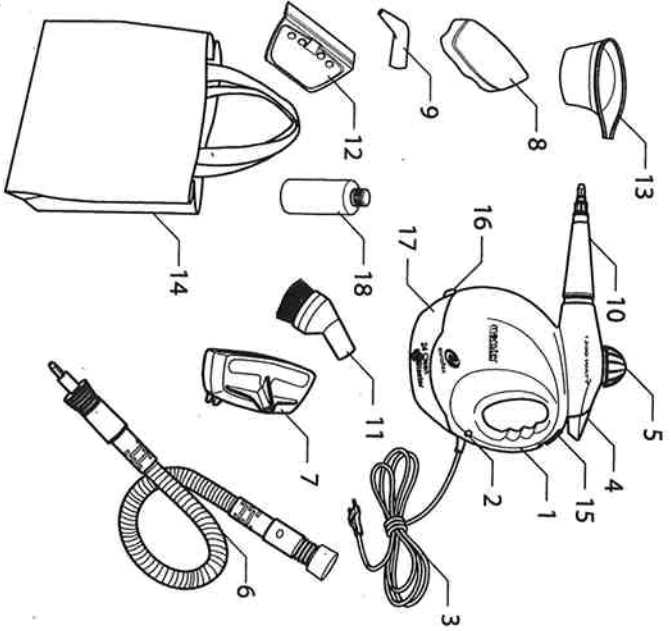
When using your Steam Cleaner, basic safety precautions should always be observed, including the following:

1. Read all instructions before using your Steam Cleaner.
 2. Use the system only for its intended use.
 3. To protect against a risk of electric shock, do not immerse any part of the system in water or other liquids.
 4. Never yank cord to disconnect from outlet; instead, grasp plug and pull to disconnect.
 5. **Do not** allow cord to touch hot surfaces. Let the system cool completely before putting away or opening water tank (removing the safety cap). Wrap cord loosely around integral fold-out cord winders when storing.
 6. Always disconnect system from electrical outlet when filling with water or emptying and when not in use. Always turn the safety cap slowly when opening the water tank. This will allow any remaining steam to escape gradually.
 7. **Do not** operate the system with a damaged cord or plug, or if the appliance or any other part of the system has been dropped or damaged. To avoid the risk of electric shock, do not disassemble or attempt to repair the Steam Cleaner. Return the system to the seller or contact one of our licensed servicing centers for examination and repair.
 8. **Do not** leave the system in use without surveillance and presence of children.
 9. Burns can occur from touching hot metal parts, hot water or steam. Use caution when draining unit after use as there may be hot water in the unit. Never direct steam at any person. The steam is very hot and can cause burns.
 10. **Do not** operate in the presence of explosive and/or flammable fumes.
 11. This appliance is intended only for household use. Follow all user instructions in this manual.
 12. Never use any chemicals or substance other than tap water in the machine. Use of chemicals may damage the machine. Use of chemicals will automatically void your warranty.
 13. Appliance has to work on flat surfaces.
 14. Never direct steam at any electrical appliance or appliance including electrical parts (TV, radio, electrical oven, ...).
- To reduce the risk of fire, electric shock, or injury:**
- **Do not** leave the Steam Cleaner plugged in when unattended. Unplug the electrical cord when not in use and before servicing or refilling water tank.
 - Use only as described in this manual. Use only manufacturer's recommended accessories.
 - **Do not** pull cord, use cord as a handle, close a door on cord, or pull cord around sharp edges or corners. Keep cord away from heated surfaces.
 - **Do not** use extension cords or outlets with inadequate current carrying capacity.
 - Turn off all controls as applicable before unplugging from electrical outlet.
 - **Do not** unplug by pulling on cord. To unplug, grasp the plug, not the cord.
 - **Do not** handle plug or steam cleaner with wet hands or operate without shoes.
 - **Do not** put any objects into openings. Do not use with any opening blocked.
 - Store your appliance indoors in a cool, dry area.
 - Keep your work area well lit.
 - **When in use, never turn the appliance over or on its side. Never direct steam towards people, animals or plants.**
 - **Do not** immerse the steam cleaner into water or other liquids. Always unplug the power cord from the electrical socket when filling the steam cleaner.
 - **Do NOT add cleaning solutions, scented perfumes, oils or any other chemicals to the water used in this appliance as this may damage the unit or make it unsafe for use.** Use tap water or distilled/purified water if the tap water in your area is very hard.
- These appliances comply with the requirements of Directive 2004/108/CE on "Electromagnetic compatibility" and Directive 2006/95 /CEE on "Safety of electrical equipment". The appliance carries the CE safety standard label.

SAVE THESE INSTRUCTIONS

HANDY STEAM CLEANER

Model: Monster Superclean SC20



KEY FEATURES

1. Body.
2. Power light.
3. Power Cord.
4. Steam Lever.
5. Boiler cap.
6. Extension Hose - for increasing the flexibility of the appliance. (*)
7. Upholstery Nozzle - the flat surface covers wide areas. (*)
8. Cloth Cover - the fabric cover is best for stain removal from upholstery and carpets (2 pcs white and 2 pcs blue). (*)
9. Angled Nozzle - attaches to (10) for hard to reach areas. (*)
10. Bayonet Tip - Standard attachment with fine point spray end.
11. Nylon Round Brush - For Smaller areas and appliances. Ideal for detail work and scrubbing (2 pcs) - Brass Round Brush. (1 pcs) (*)
12. Window Squeegee - attaches to the Upholstery Nozzle for cleaning glass. (*)
13. Water refill - for filling the appliance with water.
14. Accessories Bag. (*)
15. Clean Blast solution release button
16. Clean Blast solution container
17. Clean Blast solution bottle.
18. Clean Blast solution bottle.

(*) These accessories are available and OPTIONAL depending on the purchased model.

HANDY STEAM CLEANER

DESCRIPTION

"Congratulations on your purchase of the MONSTER 1200 SANITIZING STEAM CLEANER. This product has many unique and patented features that will change the way you clean. Its versatile design lets you clean with the eco friendly power of EXTREME steam and, at your demand, instantly integrate our special CLEAN BLAST formula into the steam that results in true on contact sanitizing of almost any surface.

INSTRUCTIONS FOR USE

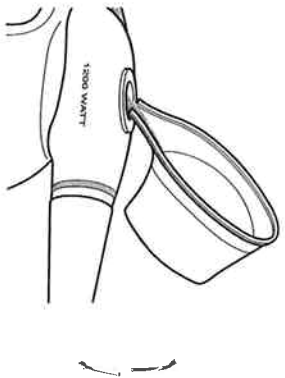
The Steam Cleaner can clean and sanitize all types of surfaces designed to withstand high temperatures such as marble, ceramic, stone sealed wood, sealed grout, cook tops, window, mirrors, etc. It is not recommended for use on unsealed wood surfaces, cold glass and soft plastic areas.

WARNING: On surfaces that have been treated with wax, the wax may be removed by the heat and steam action. Do not use on unsealed wood floors or direct steam on any wood floor for an extended period of time. This could cause the wood grain to rise. It is therefore, recommended that you check the use and care instructions of any surface from the manufacturer to ensure suitability to steam cleaning and that sample cleansing be carried out on an isolated area of the desired surface. In case steam is used to smooth wrinkled fabric or clothing, do not direct steam at the body.

ASSEMBLY AND USE

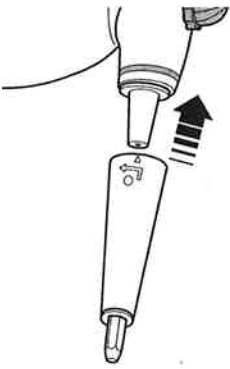
WARNING: The steam lever must be held in operation until all steam pressure has been released prior to removing the Water Tank Cap. Please also note that the unit is not to be plugged into an electrical outlet until step 8.

1. Press the Water tank cap and Unscrew it to the empty water tank. Using the measuring cup fill tank with one measure of water equivalent to 300 ml /10 oz
NOTE: Do not overfill, to reduce the risk that water coming out.
2. Re-seal the water tank by screwing the Water Tank Cap back into place.



USE OF ACCESSORIES

Before using the Power Steamer, the attachment of an accessory will be required in conjunction with the type of surface to be cleaned.



3. Please put the Spray-Nozzle and the slot of the machine in order, along the direction arrow, and insert it, then clockwise turn 90°. To remove the Spray-Nozzle, please operate reversely.
4. To use the Flexible Hose, the Jet Nozzle or the Fabric Accessory must be attached onto the end using the same process as outlined in step 3.



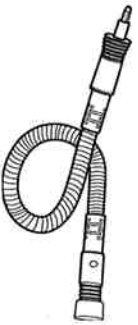
Bayonet Tip

Handy to use on floors and edges



Upholstery Nozzle (*)

Great for steaming wrinkles and creases out of fabrics



Extension Hose (*)

Recommended to use for hard to reach areas.



Cloth Cover (*)

(*) "Optional Accessories available with some kits." 6

ASSEMBLY AND USE

5. The Round Brush and the Curved Nozzle Accessory can be attached to end of the Jet Nozzle by pushing the accessory on using the hexagonal alignment as a guide.



Nylon Round Brush (*)
Round Brush recommended for sealed grout, cook tops and bench tops.



Angled Nozzle (*)
Curved Nozzle recommended for hard to reach area such as window sills and toilet

6. To use the Window Cleaning attachment it must be clipped into the Fabric Accessory by hooking the two hinges onto the tabs and lifting the window cleaner around to the top of the fabric tool and clipping the latch onto the fabric cleaner to secure in place. To remove the window cleaner, simply lift the latch to unclip and separate.
WARNING: Using window cleaner on cold glass may cause the glass to break. Proceed with caution when carrying out this operation.



Window Squeegee (*)

7. To use the Fabric Accessory, stretch the Cloth Covering to fit over the Fabric Accessory. It is recommended that the Fabric Accessory be attached to the flexible hose for maximum accessibility for clothing, upholstery and window furnishings.



(*) "Optional Accessories available with some kits."

STARTING THE STEAM CLEANER

8. Plug the power cord into an electrical outlet. Power light goes on.
9. After 3-4 minutes the appliance is ready to generate the steam..
WARNING: Do not leave the steam cleaner unattended while waiting for steam.
10. Press the Steam Lever to emit the steam and begin passing slowly over the surfaces intended for cleaning. For disinfecting areas, hold the steam cleaner no more than 1 inch away from the surface and pass over slowly until entire area is covered.

ASSEMBLY AND USE

FURTHER WATER TANK FILLING

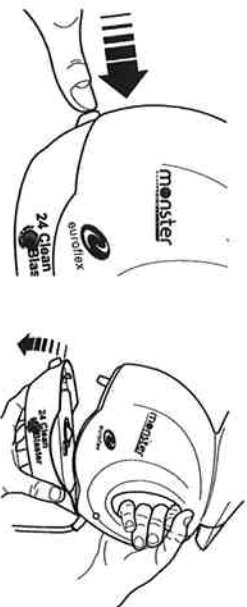
1. Unplug the power cord from electrical outlet.
12. Press and hold Steam Lever until all pressure has been released.
13. Before opening Water Tank Cap it is important to wait approximately 3 minutes for the appliance to cool down. Slowly turn the cap, only a half turn, and wait for the hissing sound (if any) to completely stop. The hissing sound may be present due to residual pressure not released while holding the steam lever.
14. Carefully press the cap and unscrew it and follow process outlined in step 1 and 2.

CLEAN BLAST SYSTEM

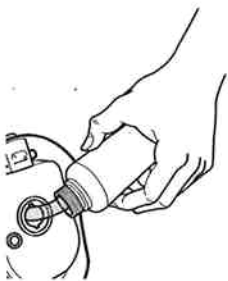
This appliance is equipped with an important function that ensure perfect clean blast while cleaning all surfaces. Monster Superclean combines the power of steam cleaning with the efficacy of the product "Clean Blast" sanitizing.

The clean blast solution is placed into the box.

Release the clean blast solution container.



Unscrew the cap of the clean blast tank and fill with bottle contents.



To release the solution and combine with the steam, press the button on the handle as shown on the picture.

Please be aware that when the Clean Blast trigger is on the "on" position, the steam output may appear more "humid"; that is normal because the hot steam gets mixed with the Clean Blast product and as a result the steam will appear "thicker"



MAINTENANCE

NOTE: Please ensure the steam cleaner has been unplugged from the power source and cooled down before any cleaning and maintenance is carried out.

15. Always empty any excess water from water tank after each use. This operation will prolong the life of your appliance.
16. Always ensure the unit has cooled before putting it away in a dry, cool place.
17. To ensure the highest level of operation over a long period of time, it is recommended that the water tank be rinsed out with water at least once a month to clean any water calcification accumulated. **Do not use vinegar or other substances to remove lime scale deposits.**
18. To clean fill with one measure of water, replace cap and shake unit to loosen any lime scale deposits. Remove cap and empty water from tank.
WARNING: Do not immerse the steam cleaner in water.
19. **DO NOT USE WITH ANY OTHER SANITIZING OR CLEANING AGENTS. THIS PRODUCT IS DESIGNED TO BE USED WITH CLEAN BLAST ONLY.**

TECHNICAL SPECIFICATIONS

Voltage: 220 - 240 V - 50 - 60 Hz
 Power: 1200 Watt
 Tank capacity: 0,3 l / 10 oz
 Cable: 5 m / 16 ft

TROUBLE SHOOTING GUIDE	
PROBLEM	POSSIBLE SOLUTION
Unit will not switch on.	Ensure the power cord has been plugged into a power socket and the outlet is switch ON. Check the water tank is filled correctly Try another power outlet.
Unit is not producing steam.	Ensure that the water tank has been filled with the correct level of water. Ensure the unit is plugged into a power outlet. Press Steam Lever. Ensure there is no blockage, try changing accessory.
Unit sprays out water from nozzle.	Level in water tank may be too high. Check water tank and do not overfill max 300ml (10 once liquid). Hold in upright position. Do not turn the steamer on its side. Unit not fully heated. Allow the unit time to heat the water.
Accessories, once attached do not stay on.	Check that enough force has been applied to ensure the accessories are secured. Read over accessory installation steps.

IMPORTANT

Electrical Requirements:

Please ensure that the voltage shown on the rating plate of your appliance corresponds with your household electricity supply which must be A.C. (alternating current).

Appliances supplied with a fitted plug:

If the electrical sockets in your home are not suitable for the plug fitted to this appliance, the plug should not be removed. Use a standard adapter.

Note: Any plug detached from the cable must be destroyed because a plug with a damaged cable can cause serious injury or death if inserted in the power outlet.

Warning: This appliance must be earthed.

The appliance must be connected to a 220-240 volts 50 cycle AC supply by means of a three pin socket, suitably earthed and should be protected by a 13 amp fuse in the plug. The appliance is supplied with a rewirable 13 amp 3 pin plug fitted with a 13 amp fuse. Should the fuse require replacement, it must be replaced with a fuse rated at 13 amp and approved to BS1362.

If the mains plug is unsuitable for the socket outlet in your home or is removed for any other reason, then the cut off plug should be disposed of safely to prevent the hazard of electric shock. There is a danger of electric shock if the cut off plug is inserted into any 13 amp socket outlet.

How to wire a 13 amp plug.


Important!

The wires in the mains lead on this appliance are coloured in accordance with the following code:

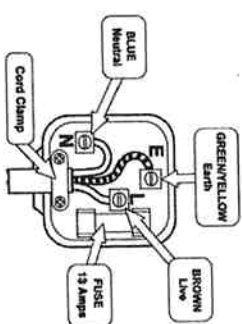
Green and Yellow - Earth

Blue - Neutral

Brown - Live

The green and yellow wire must be connected to the terminal in the plug which is marked with the letter E or with the earth symbol .

The blue wire must be connected to the terminal marked N. The brown wire must be connected to the terminal marked L.



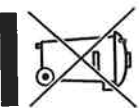
GUARANTEE AND SERVICE INFORMATION

This guarantee does not cover normal wear and tear, damage caused by overloading, negligence, accident or improper use. Any change or modification made by the purchaser or user to the appliance will invalidate the guarantee, as would any attempted repair.

The guarantee applies only when the appliance has been operated in accordance with the instructions and connected to an electricity supply which matches that shown on the base of the appliance.

The guarantee will be rendered invalid if the product is resold. The product must be used solely for domestic purposes.

Disposal of your old appliance



Disposal of your old appliance

1. When this crossed-out bin symbol appears on a product it means that the product is covered by European Directive 2002/96/EC.
2. All electrical and electronic products should be disposed of separately from the municipal waste stream via specific collection facilities designated by the government or the local authorities.
3. Proper disposal of your old appliance will help prevent potential negative consequences for the environment and human health.
4. For more detailed information about disposal of your old appliance, please contact your municipality, the waste disposal service or the shop where you purchased the product.